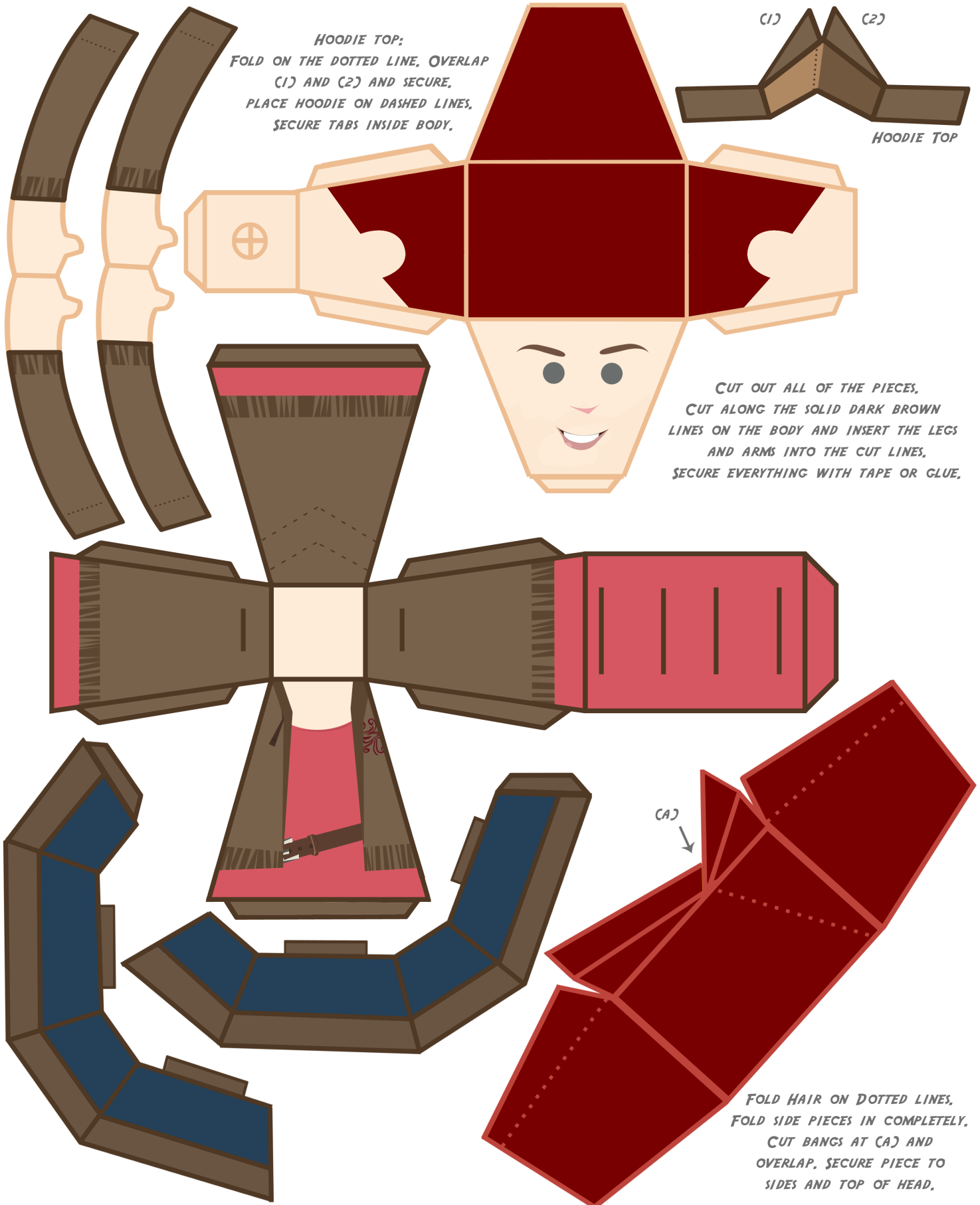




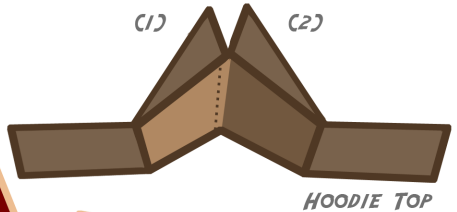
PENNY - SIGNATURE GATHERING COSTUME

Design and paper engineering by Spitefuls LLC. Characters, blog, singing-along all by Joss Whedon. Very © and ™ Joss Whedon and not officially endorsed by him... Please don't sue me!

www.drhorrible.com / www.spitefuls.com



HOODIE TOP:
FOLD ON THE DOTTED LINE, OVERLAP (1) AND (2) AND SECURE, PLACE HOODIE ON DASHED LINES, SECURE TABS INSIDE BODY.



HOODIE TOP

CUT OUT ALL OF THE PIECES, CUT ALONG THE SOLID DARK BROWN LINES ON THE BODY AND INSERT THE LEGS AND ARMS INTO THE CUT LINES, SECURE EVERYTHING WITH TAPE OR GLUE.

(A)

FOLD HAIR ON DOTTED LINES, FOLD SIDE PIECES IN COMPLETELY, CUT BANGS AT (A) AND OVERLAP, SECURE PIECE TO SIDES AND TOP OF HEAD.